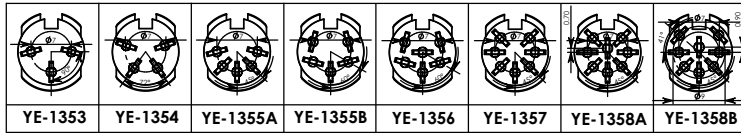
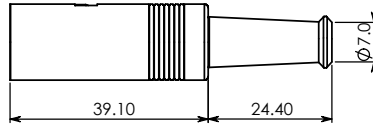
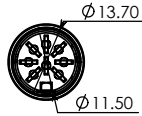
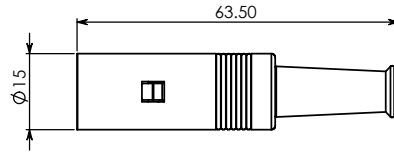


# YE-135X DIN CABLE JACK METAL SHIELD ASS'Y TYPE



## MATERIAL :

1. SHELL COVER : BRASS NICKEL PTD.
2. STRAIN BOOT : TPR
3. SHIELD COVER A: STEEL NICKEL PTD.
4. SHIELD COVER B: STEEL NICKEL PTD.
5. HOUSING : ABS
6. TERMINALS : COPPER SILVER PTD.

## SPECIFICATION :

Rating : 100V AC 1A max.

Contact Resistance :

Pins 30mΩ max.

Shell 50mΩ max.

Insulation Resistance :

100MΩ at 500V DC min.

Voltage Withstand :

250V AC for 1 minute



YE-1353



YE-1354



YE-1355A



YE-1355B



YE-1356



YE-1357



YE-1358A



YE-1358B